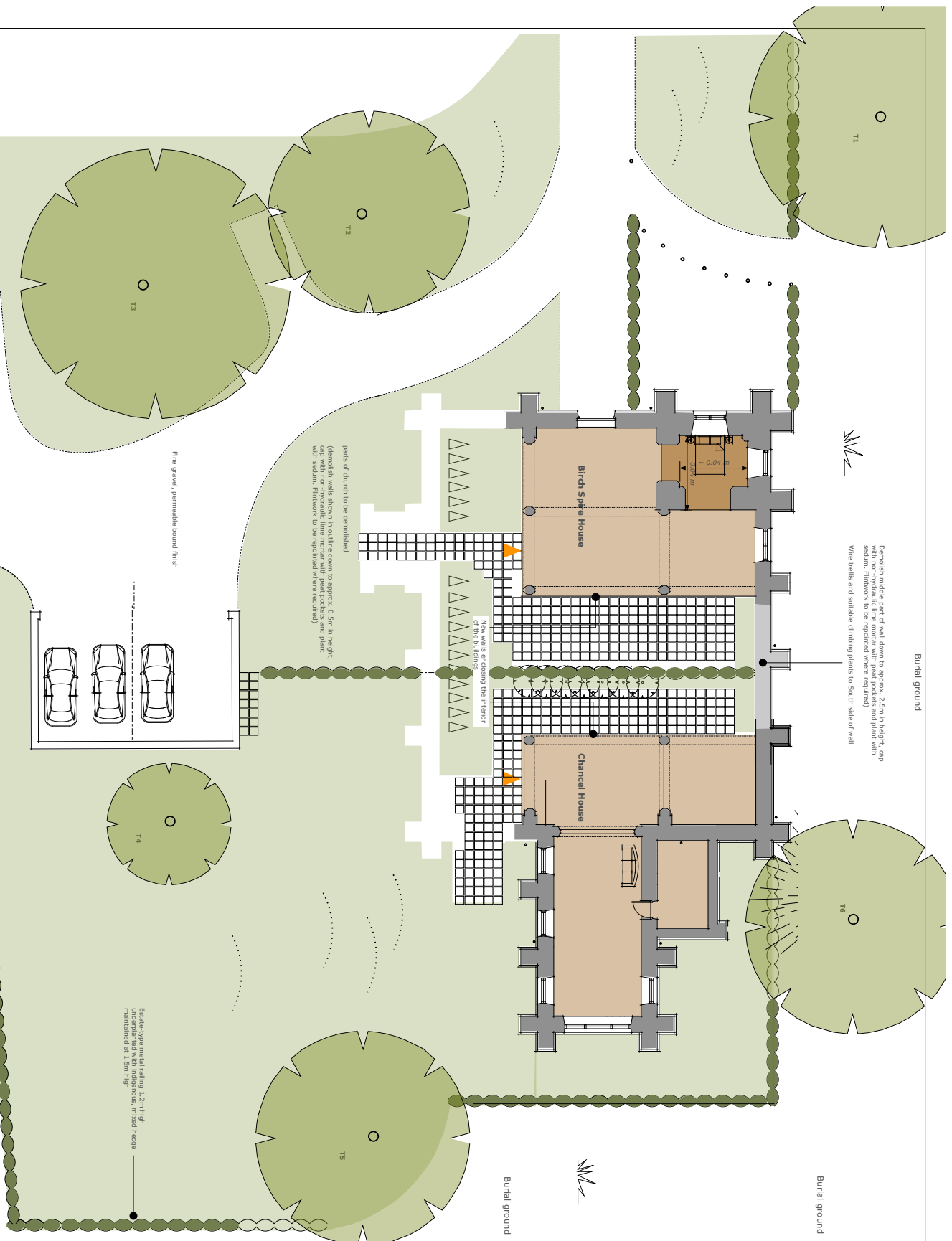


Development Options



Demolish middle part of wall down to approx. 2.5m in height, cap with non-hydraulic lime mortar with peat pockets and plant with pebbles. Framework to be repaired where required). Wire walls and suitable climbing plants to South side of wall

Parts to be demolished of the building

parts of church to be demolished (demolish walls shown in outline down to approx. 0.5m in height, cap with non-hydraulic lime mortar with peat pockets and plant with pebbles; framework to be repaired where required)

Fine gravel, permeable bound finish

public footpath

Essex Spire grass railing 1.2m high, supported on 100mm diameter cast iron posts, maintained at 1.5m high

Floor areas as shown:

Birch Spire House
 Ground floor 81.29sqm
 First floor 12.06sqm
 Second floor 12.06sqm
TOTAL = 174.64 M2

Chancel House
 Ground floor 98.00sqm
 First floor 98.00sqm
TOTAL = 196.00 M2

Option 2A

Church converted to 2 houses



Birch Church Viability Study 2013

Colchester and North East Essex Building Preservation Trust