

Development Options

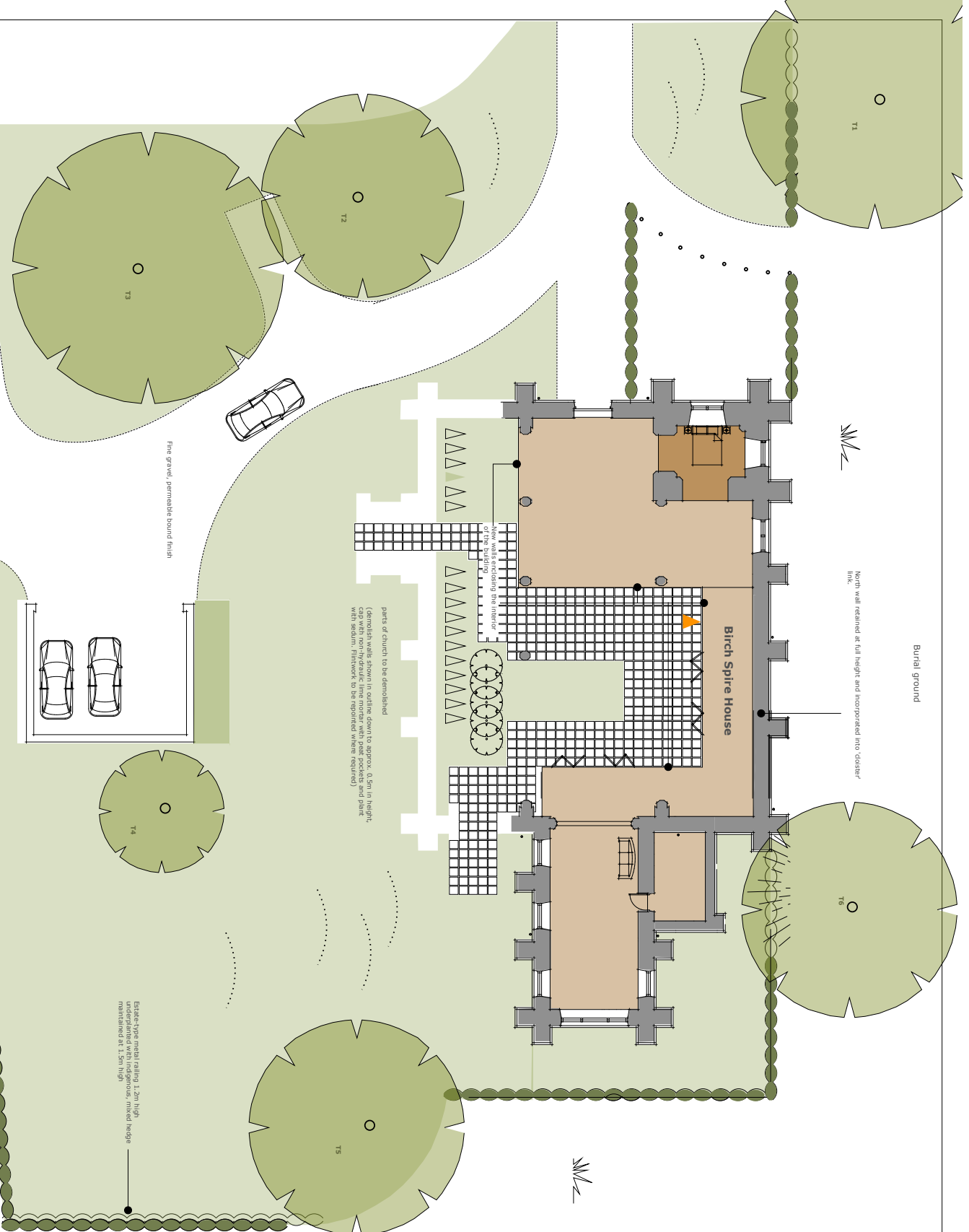
Burial ground
North wall retained at full height and incorporated into 'closter' link.

Burial ground

Burial ground

Floor areas as shown:

Birch Spire House
Ground floor 1,822.33m²
First floor 1,246.00m²
Second floor 12.06m²
TOTAL = 3125.99 M²



Option 1

Church converted to a single large house



Birch Church Viability Study 2013